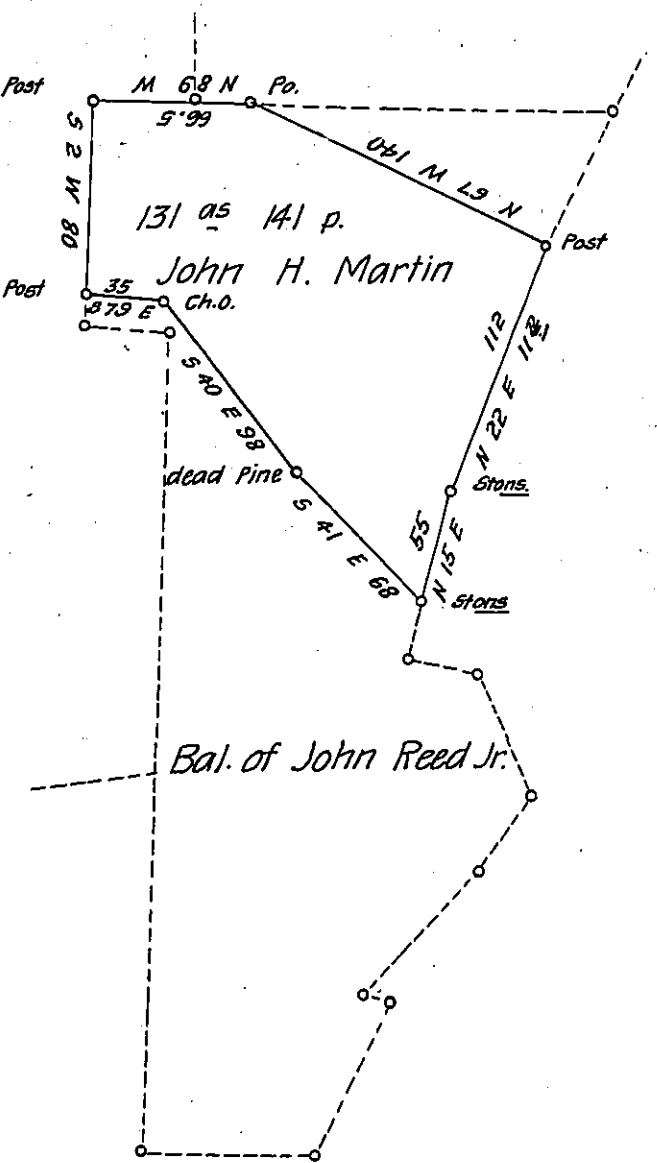


John H Martin  
in Right of  
Wm Reed



Philip Mors Heirs  
in Right of  
John Riggs

Situate in Southampton township Bedford County Containing  
 131 <sup>as</sup> 141 ps. and the usual allowance of Six per Cent for Roads & Surveyed  
 the 20<sup>th</sup> day of June 1869 for John H. Martin Being a part of a larger tract  
 of land Containing 399 <sup>as</sup> 143 ps. & allow. Originally Surveyed on Warrant  
 granted to John Reed Jr. dated 21<sup>st</sup> Feby 1794

Saml. Ketterman C.S.

To J. M. Campbell Esqr

S. G.

IN TESTIMONY that the above is a copy of the original remaining on file in  
 the Department of Internal Affairs of Pennsylvania, made  
 conformably to an Act of Assembly approved the 16<sup>th</sup> day of  
 February, 1833, I have hereunto set my Hand and caused  
 the Seal of said Department to be affixed at Harrisburg,  
 this twenty third day of October 1906

*Laac D Brown*  
 Secretary of Internal Affairs